

# PUSH control unit

Installation and operating instructions



## getAir GmbH & Co. KG

Krefelder Straße 670 | D-41066 Mönchengladbach

T +49 2161 990 950 | F +49 2161 990 959 9

info@getair.eu | www.getair.eu

All rights reserved.

These instructions have been compiled with the greatest care. Nevertheless, the publisher will accept no liability for any damage resulting from missing or incorrect details therein. We reserve the right to make partial or entire changes to these instructions without prior announcement.

All information contained in these documents is the property of getAir GmbH & Co.KG. Any publishing thereof, whether in part or in whole, requires the written consent of getAir GmbH & Co. KG. Copying the instructions within the same company for the purpose of evaluating the product or for other product-related uses is permitted and not subject to prior approval.

© 2016 getAir GmbH & Co. KG

# Table of content

1 General remarks.....	4
2 Installation preparations.....	6
2.1 PUSH control unit .....	6
2.2 Dimensions.....	7
2.3 Required tools.....	7
3 Electrical installation.....	8
3.1 Installation recommendations for the control unit.....	9
3.2 Cabling and wiring.....	10
4 Operating the system.....	12
4.1 Controls .....	12
4.2 Operating modes and functions.....	13
5 Technical data.....	14
6 Disposal.....	15
7 Warranty.....	16

# 1 General remarks

Though its contents have been checked for consistency with the described hard- and software, deviations cannot be ruled out, meaning that no guarantee of complete consistency can be given.

This documentation is updated on a regular basis. Necessary corrections and useful addenda will always be included in subsequent versions.




They are also available at [www.getair.eu](http://www.getair.eu).

## 1.1 Safety information

Attention is to be paid to the safety information contained in these instructions for installing and operating the control unit. Before any work is carried out on the unit / system, the instructions and safety information are to be read carefully in full. Non-compliance with the safety information can lead to harm/damage to persons and/or equipment.

Assembly, electrical installation and system start-up should only be performed by skilled persons. These are people with relevant safety training and qualified to install, commission and label equipment, systems and cabling in accordance with current safety standards.

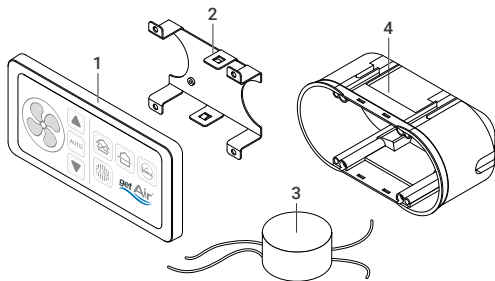
The following list contains descriptions of the symbols and terms used in these instructions symbols and explanations:

<b>Hazard symbol</b>		Caution	This hazard symbol warns about the danger of injury.
		Electricity	This hazard symbol warns about the danger of electrocution.
<b>Warning symbol</b>		Please note	This warning symbol indicates important information.

## 2 Installation preparations

Before starting installation, please check that all components are present, as otherwise it will not be possible to complete the installation.

### 2.1 PUSH control unit



Article name	Item	Content	Number
<b>PUSH control unit</b>	1	PUSH operating panel	1
	2	Frame	1
	3	Power supply	1
	4	Pattress box for the PUSH control unit*	1

\* The pattress box is not included in the PUSH control unit set. It can be purchased from getAir as an accessory (see Accessories).

## 2.2 Dimensions

Name	Width (mm)	Height (mm)	Depth [mm]	Ø (mm)
PUSH operating panel	150	75	27,5	-
Frame	82,6	69	20,8	-
Power supply	-	-	32,5	53,5
Pattress box for the PUSH control unit	142	70	75	-

## 2.3 Required tools

The following equipment is needed to install the control unit:

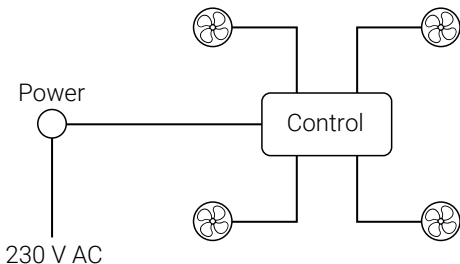
- Screwdriver
- Hammer and chisel for cable ducts / slits
- Deep pattress box for flush mounting (single or double, dependent on the control unit)

### 3 Electrical installation

Fan units can only be operated in conjunction with a control unit, purchasable separately. Up to four fan units can be connected to one control unit. Where more than four fan units are needed, additional independent groups managed by further control units will be needed.

The control unit can be installed anywhere. 3-pole cables (preferably LiYY cables) are required. To ensure adequate power, the cable length between the control unit and fan unit must not exceed 100 m.

#### Example of the wiring of four fans





### 3.1 Installation recommendations for the control unit

Install the pattress boxes at standard wall height. The power supply can also be installed in the box. The frame must be correctly positioned in the pattress box to allow the control panel to be clicked in. Please make sure that the bottom side of the control panel is unobstructed and that the opening for the humidity sensor is not blocked.

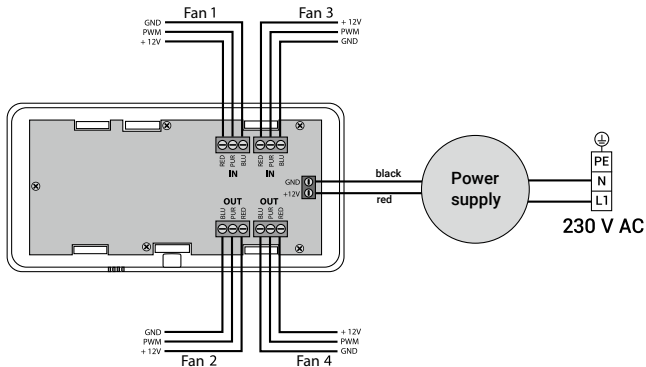


**THE INSTALLATION IS TO BE DONE IN SUCH A WAY THAT THE 12V OUTPUT CABLE AND THE 230V INPUT CABLE ARE NOT ON THE SAME SIDE OF THE POWER SUPPLY (INSTALL THE 230 V CABLE UNDERNEATH).**

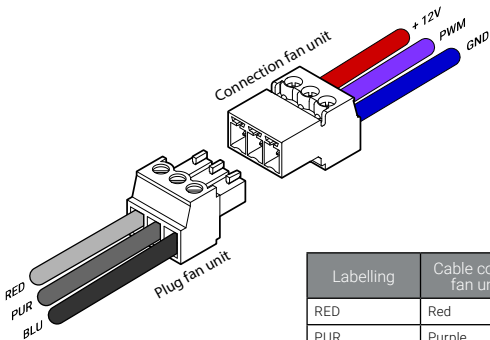
Instead of a power supply unit in a pattress box, a DIN rail power supply may be used. However, such a power supply requires a further cable duct for the cable to the fuse box.

### 3.2 Cabling and wiring

All electrical work must be performed by a qualified electrician. Make sure that all wiring is done correctly.



To connect the control unit to the fan units, a 3-pin plug must be connected to the cable. The plug must be wired as shown below.



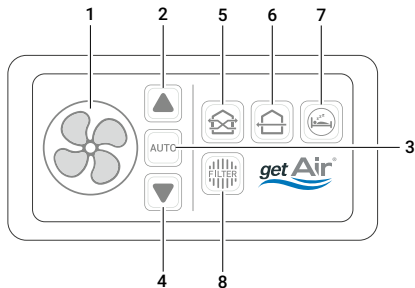
Labelling	Cable colour fan unit	Function
RED	Red	+12V
PUR	Purple	PWM
BLU	Blue	GND



**INCORRECT WIRING CAN CAUSE DAMAGE TO THE FAN UNIT.**

## 4 Operating the system

### 4.1 Controls



1	Fan speed display	Shows the manually selected fan speed, or the speed automatically selected by the humidity sensor.
2	Arrow Up/ON	Increases the fan speed/turns the system on.
3	Automatic mode	Activates/deactivates automatic mode.
4	Arrow down/OFF	Decreases the fan speed/turns the system off.
5	Eco-Mode	Activates heat recovery mode.
6	Full-blast mode	Activates full-blast mode.
7	Sleep mode	Activates sleep mode.
8	Filter change display	Tells the user to change the filter.

## 4.2 Operating modes and functions



### **Eco mode**

The system changes the airflow direction once every 50 - 70 seconds, dependent on the selected fan speed, thereby ensuring optimal heat recovery.



### **Full-blast mode**

The system runs in just one direction, allowing a room to be thoroughly ventilated. Heat recovery is not available in this mode.



### **Automatic mode**

When running in automatic mode, the integrated humidity sensor automatically determines fan speed.



### **Sleep mode**

The system stops working for one hour, giving a room's occupants sufficient time to get to sleep. Once the selected duration is over, the system will continue in the previously activated mode.



### **Filter status**

An integrated meter is used to determine when a filter change is needed. This is calculated on the basis of the airflow volumes. When the filter needs changing, the filter change LED starts blinking. Once it has been changed, just press the button to reset the meter.



**THE OPTIMAL TIME FOR CHANGING A FILTER IS DEPENDENT ON LOCAL CONDITIONS AND CAN THUS VARY.**

## 5 Technical data

Power [V]	230 AC / 50-60 Hz
Operating voltage [V]	12 DC SELV
Energy consumption <sup>1)</sup> [W]	1,2
Software class	A
Permissible operating temperature [°C]	0 ... 40
Type of protection	IP 40
Contamination level	2
Dimensions [mm]	150 x 75 x 10 (WxHxD)
Colour	White
Conformity	<b>CE</b>

<sup>1)</sup> without power supply unit

## 6 Disposal

Due to little or no harmful materials being used in their production, the majority of components described in these operating instructions can be recycled.

Should you want to dispose of your ventilation unit, please do so in accordance with current national regulations. Contact the appropriate authority. Packaging material should be sorted before disposal.

Electronic devices or batteries do not belong in normal household refuse.

# 7 Warranty

## 7.1 Warranty conditions

getAir GmbH & Co. KG provides a 24-month warranty on its ventilation system (or 30 months from the system's date of manufacture). Warranty claims apply solely to material and/or construction faults which occur during the warranty period. Under the warranty conditions, repairs may only be carried out with getAir's prior written consent. A warranty on components exists solely when these have been supplied by the manufacturer and have been installed by a technician recognised by the manufacturer.

The warranty expires in the following cases:

- when the warranty period has come to an end;
- when a filter is used that has not been approved by the fan unit manufacturer;
- when non-original replacement parts are installed;
- when the unit is used incorrectly/improperly;
- when the faults/defects are the result of faulty installation, improper/incorrect use or dirt;
- when unapproved changes or modifications have been made to the system.



**OUTSIDE GERMANY, THE WARRANTY IS COVERED BY THE WARRANTY REGULATIONS OF THE COUNTRY IN WHICH THE SYSTEM WAS SOLD. IN SUCH A CASE, PLEASE CONTACT THE DEALER IN YOUR HOME COUNTRY.**



## 7.2 Liability

The system has been developed and manufactured for the decentralised ventilation of homes and functional premises.

Any other usage is considered to be improper and can cause damage to the system or to persons. In such a case, the manufacturer cannot be held liable. The manufacturer cannot be held liable for any damage resulting from one of the following causes:

- when the safety, operating and maintenance instructions contained in this document have not been followed;
- when the installation was not performed correctly;
- when non-original replacement parts (not approved by the manufacturer) are installed;
- when the faults/defects are the result of faulty installation, improper/incorrect use or dirt;
- normal wear and tear.

### 7.3 Complaints

Please check the contents of the delivered material in accordance with the delivery note. Also check for any transport damage. Report any missing items to your supplier within four weeks of delivery.

### 7.4 Documentation

The above documentation describes the functionality of the standard configuration. To maintain clarity, we are unable to take account of every possible installation, operating or maintenance configuration. The diagrams in this documentation may deviate slightly from the design of the product you have purchased. Even when this is the case, the functions basically remain the same.

### 7.5 Service

For technical advice, please contact your supplier, dealer or our service staff.



**get Air<sup>®</sup>**

The logo for 'get Air' features the word 'get' in a lowercase, bold, sans-serif font, followed by 'Air' in a larger, bold, sans-serif font. A registered trademark symbol (®) is positioned to the upper right of 'Air'. Below the text is a stylized blue wave graphic consisting of two overlapping, curved lines.

*The future of home ventilation*